

V6^{6000lm}

LEDLIGHT
by Multiblitz

THE COMPACT HYBRID
CONTINUOUS LIGHTING SOLUTION
FOR PHOTO AND VIDEO

7

LEDLIGHT
V6^{6000lm} V6^{6000lm} V6^{6000lm} V6^{6000lm}
6000lm



V6

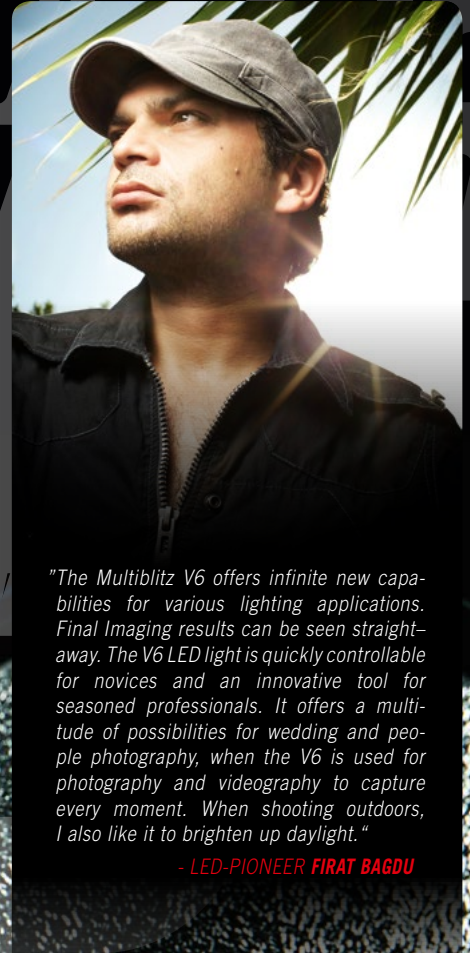
6000lm

LEDLIGHT

by Multiblitz

NEW!
FOR PHOTOKINA
2014

- + CONTEMPORARY, INNOVATIVE TECHNOLOGY. POWERFUL AND LIGHTWEIGHT.
- + FLATTERING COLOR RENDITION. SLIGHTLY WARMER COLOR TEMPERATURE BETWEEN WARM AND NEUTRAL WHITE - ESPECIALLY TAILORED TO SKIN TONES.
- + NATURAL, NEUTRAL, NOT TOO COLD DAYLIGHT.
- + EQUIPPED WITH ONE OF THE MOST ADVANCED AND EFFICIENT LED MODULE AVAILABLE.
- + LUMINOUS FLUX OF 6000 LUMENS (LM), EQUIVALENT APROX. 650 W HALOGEN LIGHT.
- + EXTREMELY HIGH LUMINOUS EFFICACY (LM/W); MORE "BRIGHTNESS" PER WATT COMPARED TO HALOGEN LIGHT SOURCES.
- + OUTPUT CONTROL WITH 2.5 STOPS IN ½ STEPS WITH MULTI-VOLTAGE POWER PACK.
- + EXTREMELY DURABLE LED MODULE WITH A LIFETIME OF OVER 50,000 HOURS.
- + NO HEAT GENERATION AND HEAT ACCUMULATION IN THE LED MODULE AND LIGHT MODIFIERS. SILENT ACTIVE FAN COOLING.
- + GOING GREEN? LOW POWER CONSUMPTION, NO HARMFUL UV RADIATION, LED MODULE CONTAINS NO MERCURY.
- + LIMITLESS LIGHT SHAPING POSSIBILITIES: COMPATIBLE WITH ALL MULTIBLITZ P-TYPE BAYONET LIGHT MODIFIERS.
- + BUILT-IN MULTI-VOLTAGE TECHNOLOGY (MVT): 90-260V FOR OUTDOOR PHOTO AND VIDEO SHOOTS WITH THE MULTIBLITZ PROPAC BATTERY PACK. WORLDWIDE AUTOMATIC VOLTAGE RECOGNITION IN 110V AND 230V POWER GRIDS.



"The Multiblitz V6 offers infinite new capabilities for various lighting applications. Final imaging results can be seen straight-away. The V6 LED light is quickly controllable for novices and an innovative tool for seasoned professionals. It offers a multitude of possibilities for wedding and people photography, when the V6 is used for photography and videography to capture every moment. When shooting outdoors, I also like it to brighten up daylight."

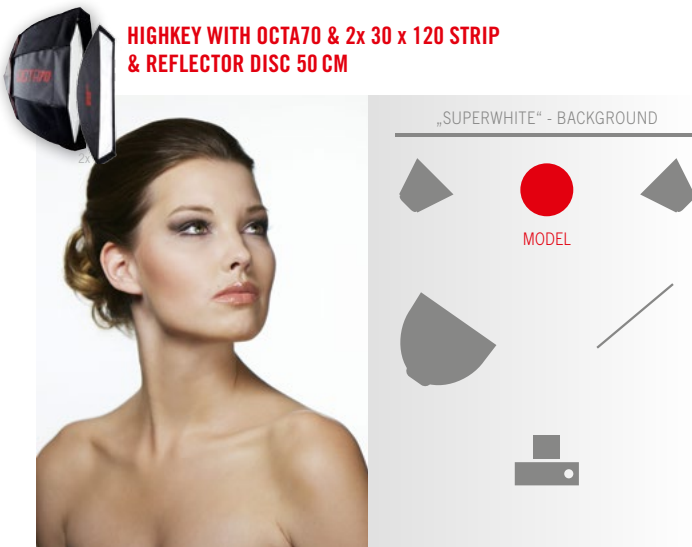
- LED-PIONEER FIRAT BAGDU

PROPAC COMPATIBLE

IMAGE BY: FIRAT BAGDU // WWW.BAGDU.DE

- + IDEAL FOR BEAUTY, PORTRAIT, PEOPLE AND TABLE-TOP PHOTOGRAPHY.
- + HOMOGENEOUS LIGHT WITH NATURAL CHARACTER, SOFT SHADOWS AND UNIFORM DISTRIBUTION.
- + A EASY TO USE LIGHT FOR PHOTO NEWBIES. INTUITIVE TO OPERATE, NO UNEXPECTED DIFFERENCES BETWEEN THE SUBJECT ILLUMINATION AND IMAGE RESULT.

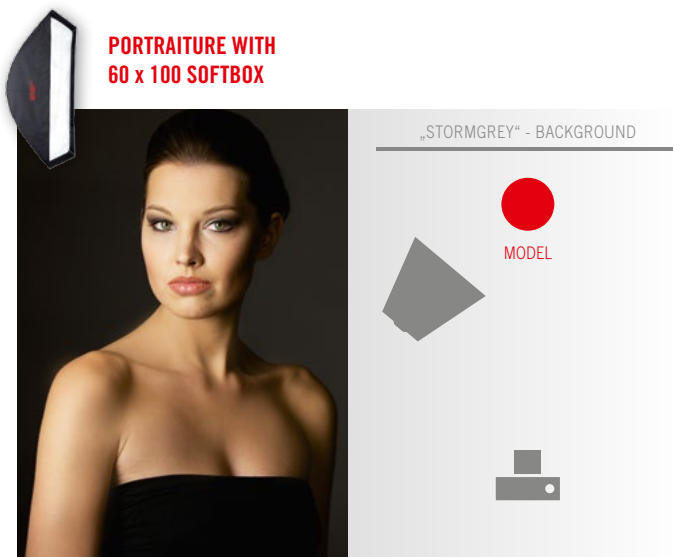
- + NEW CREATIVE POSSIBILITIES FOR EXPERIENCED PROFESSIONALS. IDEAL FOR GOAL ORIENTED WORKFLOWS WITH QUICK RESULTS.
- + COMPATIBLE WITH ALL CAMERA TYPES, FROM SMARTPHONE TO LARGE FORMAT.
- + NO SYNCHRONIZATION, NO CABLES, EASY COLOR MATCHING.



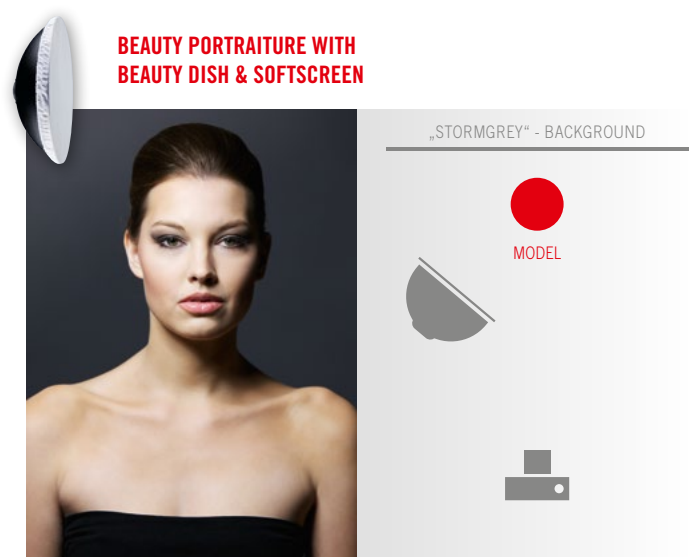
>> SET UP



>> SET UP



>> SET UP

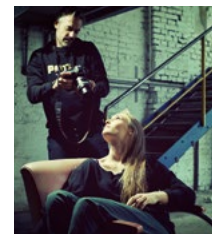
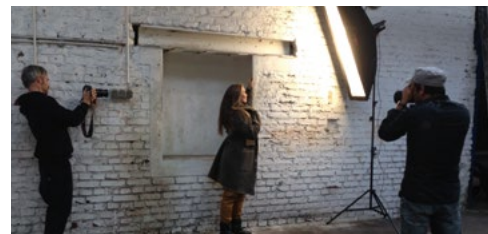


>> SET UP

- + A TRUE MOVIE LIGHT FOR VIDEOGRAPHERS: PROVIDING A SLIGHTLY WARMER COLOR TEMPERATURE, WITHOUT THE IRRITATING POINT PATTERN EFFECT OF LED PANELS.
- + QUICK AND EASY ADAPTION TO THE AMBIENT LIGHT.
- + EASY HANDLING: CAN BE USED ON A TRIPOD, MONOPOD, OR JUST HELD IN YOUR HAND.
- + RELIABLE AND SILENT BY A COMBINATION OF AW-6063 ALUMINUM/SILICON HEAT SINK AND ACTIVE SILENCER FAN.
- + A WIDE RANGE OF MULTIBLITZ P-TYPE LIGHT MODIFIERS AVAILABLE FOR VIDEO: SOFTBOXES, OCTABOXES, GRIDS, BARN DOORS, GELS AND MUCH MORE.

PHOTOKINA SPOT 2014

>> GO TO WWW.MULTIBLITZ.COM TO SEE THE VIDEO !



V6^{6000lm}

LEDLIGHT

by Multiblitz



THE COMPACT HYBRID CONTINUOUS LIGHTING SOLUTION FOR PHOTO AND VIDEO



>> V6 LEDLIGHT
CONTEMPORARY & INNOVATIVE.
COMPACT & EFFICIENT.



>> V6 MULTI-VOLTAGE
POWER PACK



V6 LEDLIGHT

PROPAC^{COMPATIBLE}



SPECIFICATIONS:

- + COLOR TEMPERATURE: 4000 K, STABLE OVER ENTIRE CONTROL RANGE
- + LUMINOUS FLUX: 6000 LM, (EQUIVALENT 650 W HALOGEN)
- + ILLUMINANCE: 1782 LUX @2 M
- + LIGHT SPREAD @2 M/@60° BEAM ANGLE WITH STANDARD REFLECTOR (FILNOS): 2,31 M
- + COVERAGE AREA @2 M/@60° BEAM ANGLE WITH STANDARD REFLECTOR (FILNOS): 4,19 M²
- + EFFICACY: 85 LM/W
- + CRI > 92 (+/-2%)
- + CHROMATICITY TOLERANCE (CCX, CCY): +/- 0,0005 %
- + LIFETIME (LIGHT DEGRADATION, L70): 50,000 H
- + MULTI-VOLTAGE: 90-260V
- + UL-, ROHS- & CE- NORMED
- + BAYONET-MOUNT: P-TYPE
- + DIMENSIONS, MM / IN:
261 X 110 X 162 / 10.2 X 4.3 X 6.4
- + WEIGHT V6, KG / LBS: 1.4 / 3.0
- + WEIGHT MV POWER PACK, KG / LBS: 0.6 / 1.3W

OBTAINABLE PERFORMANCES WITH PROPAC BATTERY PACKS, V6 @ FULL POWER:

+ 1 X V6	W/ PROPAC 1:	70 MIN.
+ 2 X V6	W/ PROPAC 1:	35 MIN.
+ 1 X V6	W/ PROPAC 2:	150 MIN.
+ 2 X V6	W/ PROPAC 2:	75 MIN.



PROPAC 1



PROPAC 2

 VISIT US ONLINE:
WWW.MULTIBLITZ.DE | WWW.MULTIBLITZ.COM | WWW.MULTIBLITZUSA.COM

6000 lm

LEDLIGHT

6000 lm
V6 V6

6000 lm

6000 lm



Multiblitz
+ MADE IN GERMANY

MULTIBLITZ MANNESMANN GMBH | FERDINAND - PORSCHE - STRASSE 19 | D-51149 KÖLN | GERMANY |
FON: +49 (0) 2203 - 93 96 10 | FAX: +49 (0) 2203 - 93 96 49 | E-MAIL: INFO@MULTIBLITZ.DE | INTERNET: WWW.MULTIBLITZ.COM
WWW.MULTIBLITZUSA.COM

ENGL 09.14

6000 lm